

New US-525M Features Include

- Bright, colorful and easy to read display.
- User friendly front control panel.
- Direct access function keys for quick adjustment of controls.
- Easily integrates into current production processes.

Control Features

- Operate and display 1 to 8 channels.
- Encoder knob for scrolling through menu.
- Enter, Cancel, Null, Erase and display controls.
- Four Programmable function keys (F1 – F4).

Display

- 12" (30.5cm) diagonal color LCD, flat panel.
- Selectable X/Y impedance plane display, and oscilloscope display (V2.0 software).
- Selectable display mode including strip chart, and impedance plane.
- Sensitivity scaling of 0.1, 0.2, 0.5, 1.0, 2.0, 5.0 Volts per division.
- Auto clear of 0 to 10 second in 1 second increments.
- Variable persistence of 0-10 seconds.
- Null point can be adjusted for operator convenience.
- Rotation (phase) 0-359 degrees in 1-degree increments.

Frequency

- Range from 10 Hz to 10 MHz.
- Probe Drive 2, 4, 7 Volt output adjustable on each channel with output impedance of 10 Ohms.

Gain

- 0 to 99.9 dB in 0.1 dB steps.

Filters

- Low and High pass adjustments from 0 to 10 KHz in 1 Hz increments for each channel.

Probe Types

- Absolute, differential, reflection and differential reflection.

Data Storage On a 32 Gig Internal Card

- Programmable test setups: Store up to 999 test setups.
- Data storage: Can store up to 999 data files in auto file naming.
- File storage: Can store up to 999 BMP & text or Report files. These files can be used with report software.

Alarms

- Type - Rectangular, circle, high and low bar.
- Number per channel - 3 ea. with individual outputs.**
- Alarm 1 – 5 Volt TTL (not isolated).
- Alarm 2 – 5 Volt TTL (not isolated).
- Alarm 3 – 5 Volt TTL (not isolated).

** Capable of interfacing with the external I/O Isolation Module containing Opto-22's that connect to equipment using from 5 to 250 Volts AC or DC.

Instrument Condition

- An "Instrument OK" condition produces a 5 Volt TTL (not isolated) signal going to an Opto-22 in the I/O Isolation Module which can signal to an external controller that the US-525M is functioning normally and is ready to use for use.

Alarm Enabling / Suppression Input

- Accepts 5 volts TTL from an Opto-22 relay in the I/O Isolation Module to enable alarms or start/stop data collection while testing.

Input

- Enable Input*** - 5 volts TTL interfaced to Opto-22 style universal I/O modules to allow use with the 5 to 240 volts AC or DC equipment outputs.

***Enable Input can be used as a gate for data collection

Input/Output data

- RS-232 serial port for remote control.
- Ethernet for remote control and data transfer.
- Analog: 16 bit outputs @ +/-10 Volts.
- Probe connection via an 8 pin Burndy.

Power

- 100-250 Volts AC 50/60 Hz 400 Watts.

General

- Dimensions: 19" (48.3cm) wide x 8.7" (22.1cm) high x 18.5" (47cm) deep.
- Weight: 42 lbs (19.1kg).
- Operating temperature: 0 to 55 C (32 to 131F).
- Storage temperature: -20 to 70 C (-4 to 158F).

Operational features

- Internal Video LCD display with external RGB output.
- Eddy current impedance plane with grid, background and signal color selectable.
- Data recording (length of recording dependent on sample rate and number of channels).
- Data storage to memory card. (Amount of data dependent on memory card size).
- Ethernet for instrument control along with relative time or position stamped data transfer to client computer.

Additional features

- Simultaneous viewing of impedance plane display and the X&Y strip chart display.
- Printer support - any USB printer supported by Windows 7 included drivers.
- Configured for 19" standard blower cooled dust filtered rack mount cabinet.

Accessories

- Standard and special application probes and delivery mechanisms.
- I/O Isolation Module – Includes Opto-22 relays for enabling accessories.

UniWest

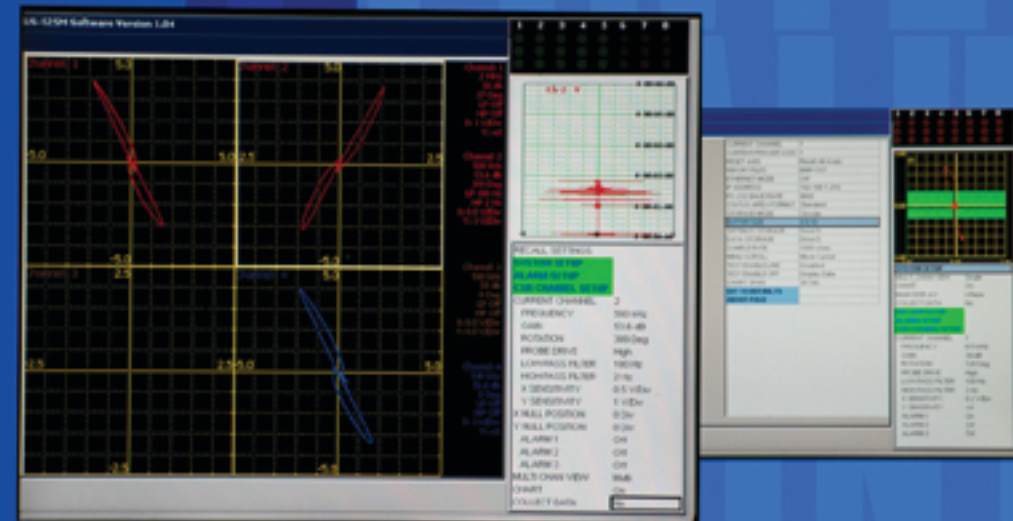
www.uniwest.com • info@uniwest.com
122 South 4th Avenue • Pasco, WA 99301
Phone: 509-544-0720 • Fax: 509-544-0868

US-525M

Multi-Channel Eddy Current Instrument



*Value, Integrity
and Quality
you and your
customers
deserve.*



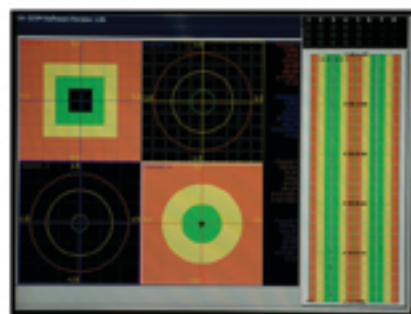
UniWest

US-525M

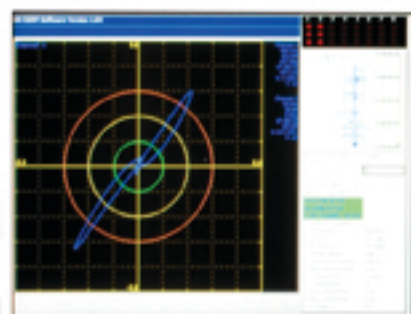
The new US-525M eddy current instrument was designed for detecting flaws in production environments of both long products (wire and tubing), and automotive component inspections. The US-525M is available in 1 to 8 channel configurations, which can be viewed on the large 12" LCD flat panel display. Multiple channels can be driven at the same or different frequencies from 20Hz to 10MHz, at gains up to 99dB. The instrument's user friendly controls and menu structure allow easy manipulation and set up of the test parameters and many I/O options. Options include; encoder inputs, communication ports (RS-232, Ethernet, Internal HD and USB Storage), and industry standard Opto-22 style alarm output and data enable input interface connections which allow easy integration into current and new production processes or automated inspection systems. Each channel includes 3 independent alarm gates, each having their own output for notifying operators of specific process conditions.

Multi-Channel Eddy Current Instrument

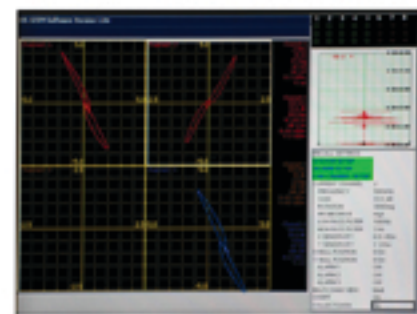
Bright,
colorful,
easy to
read
screens.



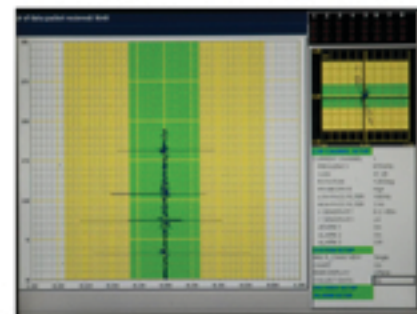
Color legend box
and circle gates.



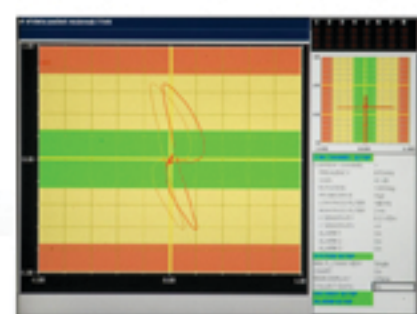
Circle gates with
alarm indicator.



4 Channel Display.



High definition
strip chart recorder.



High / Low Alarm and
strip chart.



- Easy system integration.
- All necessary encoder inputs communication ports (RS-232, Ethernet, USB) and industry standard Opto-22 style alarm outputs.
- Rugged rack mounted enclosure.

• U40-HS Coil Holder.

• U-40-1 Coils with multi-differential and absolute defect detector.

• U40-GH Hardened Steel Guides.

VALUE INTEGRITY QUALITY



New US-525M
Accessories
for "Bar, Tube
and Wire."